

# A big warehouse means a big future



Van den Berk Nurseries is undergoing significant growth. After years of development, a start has been made on the construction of a new warehouse. The roomy design will enable the nursery to achieve unprecedented rapid and effective delivery of trees of all varieties and sizes. It is another achievement on the road to a greener and sunnier future.

## Increase in delivery capacity

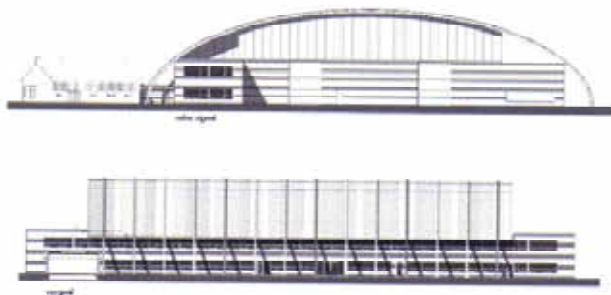
In the new hall, it is possible to load and unload trees in all weather conditions. Modern equipment allows the hall to be conditioned perfectly. A mist system creates perfect humidity, which guarantees the quality of the trees. The four gantry cranes make it possible to load the same number of trailers simultaneously. This drastically increases our delivery capacity, which means that purchasers can continue to count on short delivery periods.

## Overwhelming dimensions

Trees that have been dug out are prepared for transportation in the warehouse. The dimensions of this warehouse had to be mammoth in order to accommodate all the trees – even the very biggest – in which Van den Berk Nurseries specialises. With a height of approximately 17 metres, and a floor area of approximately 65 by 65 metres, the warehouse is an imposing sight. In October 2004, the hall became operational, and the offices will be moved in early 2005.

## One-two past/future

The warehouse will also be able to accommodate offices. The quaint farm where the office work is currently carried out will be given a thorough facelift. You will be received with traditional Brabant hospitality. This is how our rich past and promising future complement each other at Van den Berk Nurseries.



Design: Toon van Aken Architectuur

